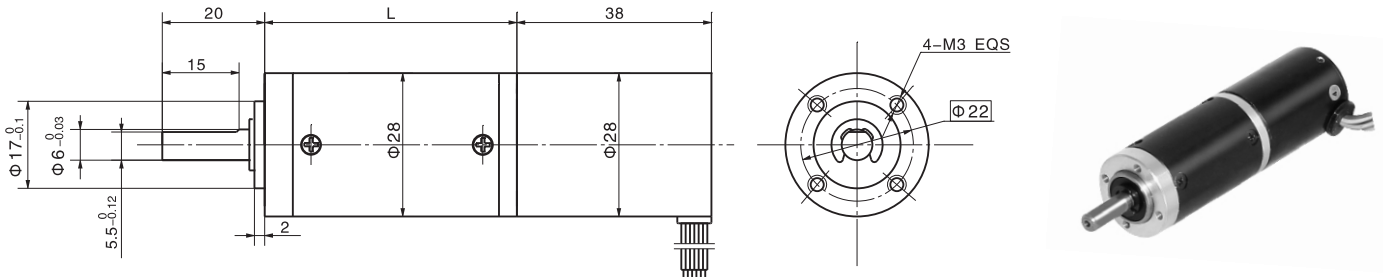


无刷直行星齿轮减速电机 BLDC Planetary Gear Motor

28JXB30K/28ZWN38

Φ28加强型减速器，允许转矩范围：0.3N.m~3.0N.m
28mm OD Reinforced Gearbox,
Permissible Load Range: 0.3N.m~3.0N.m

● 外形和安装尺寸 Dimensions



● 无刷电动机主要技术参数 Brushless Motor Technical Data

电机型号 Type	额定电压 Rated voltage VDC	空载转速 No-load speed r/min	空载电流 No-load current mA	额定转速 Rated speed r/min	额定转矩 Rated torque mN.m	输出功率 Output power W	峰值力矩 Biggest torque mN.m
28ZWN38-2430	24	3000	230	2000	5	1.0	15
28ZWN38-2440	24	4000	230	2700	7	2.0	21

● 无刷行星齿轮减速电机主要技术参数 Brushless Gear Motor Technical Data

配置28ZWN38-2430无刷直流电机 (28ZWN38-2430 BLDC Motor)

减速比 Reduction ratio	3.7	5.2	14	19	27	51	71	100	139	189	264	369	516	720
减速级数 Number of gear trains	1	1	2	2	2	3	3	3	3	4	4	4	4	4
减速器长度(L) Length(L) mm	31.0	31.0	40.1	40.1	40.1	49.0	49.0	49.0	49.0	57.9	57.9	57.9	57.9	57.9
空载转速 No-load speed r/min	809	579	214	158	111	59	42	30	22	16	11	8.1	5.8	4.2
额定转速 Rated speed r/min	539	386	143	105	74	39	28	20	14	11	7.6	5.4	3.9	2.8
额定转矩 Rated torque N.m	0.02	0.02	0.06	0.08	0.11	0.19	0.26	0.37	0.51	0.61	0.86	1.2	1.7	2.3
最大瞬间允许负载 Max. permissible load in a short time N.m	1.0	1.0	3.5	3.5	3.5	7.5	7.5	7.5	7.5	9	9	9	9	9

配置28ZWN38-2440无刷直流电机 (28ZWN38-2440 BLDC Motor)

减速比 Reduction ratio	3.7	5.2	14	19	27	51	71	100	139	189	264	369	516	720
减速级数 Number of gear trains	1	1	2	2	2	3	3	3	3	4	4	4	4	4
减速器长度(L) Length(L) mm	31.0	31.0	40.1	40.1	40.1	49.0	49.0	49.0	49.0	57.9	57.9	57.9	57.9	57.9
空载转速 No-load speed r/min	1078	772	286	211	148	78	56	40	29	21	15	11	7.8	5.6
额定转速 Rated speed r/min	728	521	193	142	100	53	38	27	19	14	10	7.3	5.2	3.8
额定转矩 Rated torque N.m	0.02	0.03	0.08	0.11	0.15	0.26	0.36	0.51	0.71	0.86	1.2	1.7	2.3	3
最大瞬间允许负载 Max. permissible load in a short time N.m	1.0	1.0	3.5	3.5	3.5	7.5	7.5	7.5	7.5	9	9	9	9	9