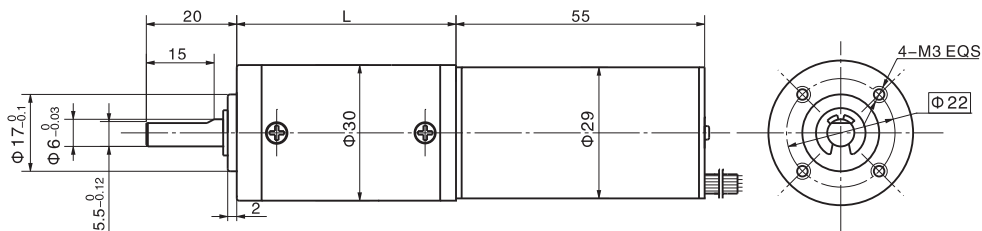


无刷直行星齿轮减速电机 BLDC Planetary Gear Motor

30JX30K/29ZWN55

Φ30加强型减速器，允许转矩范围：0.3N.m~3.0N.m
30mm OD Reinforced Gearbox,
Permissible Load Range: 0.3N.m~3.0N.m

● 外形和安装尺寸 Dimensions



● 无刷电动机主要技术参数 Brushless Motor Technical Data

电机型号 Type	额定电压 Rated voltage VDC	空载转速 No-load speed r/min	空载电流 No-load current mA	额定转速 Rated speed r/min	额定电流 Rated current mA	额定转矩 Rated torque mN.m	输出功率 Output power W	峰值力矩 Biggest torque mN.m
29ZWN55-1238	12	3800	450	3000	1000	20	6	60
29ZWN55-2438	24	3800	225	3000	500	20	6	60

● 无刷行星齿轮减速电机主要技术参数 Brushless Gear Motor Technical Data

配置29ZWN55-1238无刷直流电机 (29ZWN55-1238 BLDC Motor)

减速比 Reduction ratio	3.7	5.2	14	19	27	51	71	100	139	189	264	369
减速级数 Number of gear trains	1	1	2	2	2	3	3	3	3	4	4	4
减速器长度(L) Length(L) mm	31.0	31.0	40.1	40.1	40.1	49.0	49.0	49.0	49.0	57.9	57.9	57.9
空载转速 No-load speed r/min	1024	734	271	200	141	75	54	38	27	20	14	10
额定转速 Rated speed r/min	809	579	214	158	111	59	42	30	22	16	11	8.4
额定转矩 Rated torque N.m	0.067	0.093	0.23	0.31	0.44	0.74	1.0	1.5	2.0	2.5	3	3
最大瞬间允许负载 Max. permissible load in a short time N.m	1.0	1.0	3.5	3.5	3.5	7.5	7.5	7.5	7.5	9	9	9

配置29ZWN55-2438无刷直流电机 (29ZWN55-2438 BLDC Motor)

减速比 Reduction ratio	3.7	5.2	14	19	27	51	71	100	139	189	264	369
减速级数 Number of gear trains	1	1	2	2	2	3	3	3	3	4	4	4
减速器长度(L) Length(L) mm	31.0	31.0	40.1	40.1	40.1	49.0	49.0	49.0	49.0	57.9	57.9	57.9
空载转速 No-load speed r/min	1024	734	271	200	141	75	54	38	27	20	14	10
额定转速 Rated speed r/min	809	579	214	158	111	59	42	30	22	16	11	8.4
额定转矩 Rated torque N.m	0.067	0.093	0.23	0.31	0.44	0.74	1.0	1.5	2.0	2.5	3	3
最大瞬间允许负载 Max. permissible load in a short time N.m	1.0	1.0	3.5	3.5	3.5	7.5	7.5	7.5	7.5	9	9	9