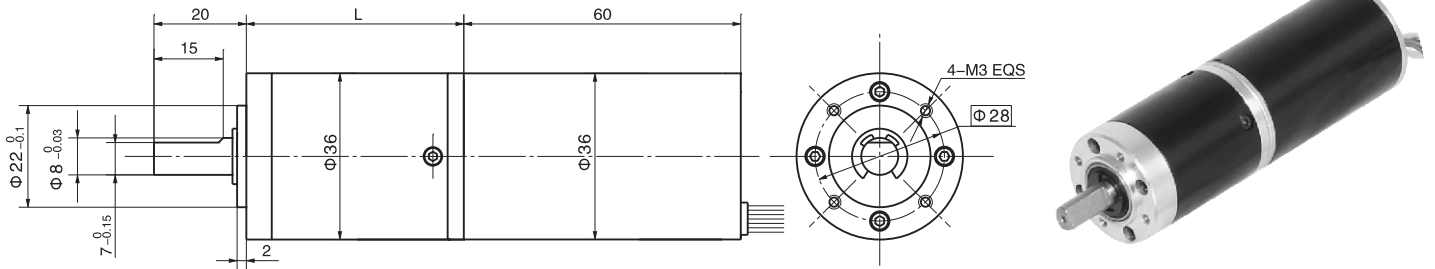


# 无刷直行星齿轮减速电机 BLDC Planetary Gear Motor

## 36JX30K/36ZWN60

Φ36加强型减速器, 允许转矩范围: 0.3N.m~3.0N.m  
36mm OD Reinforced Gearbox,  
Permissible Load Range: 0.3N.m~3.0N.m

### ● 外形和安装尺寸 Dimensions



### ● 无刷电动机主要技术参数 Brushless Motor Technical Data

电机型号 Type	额定电压 Rated voltage VDC	空载转速 No-load speed r/min	空载电流 No-load current A	额定转速 Rated speed r/min	额定转矩 Rated torque mN.m	输出功率 Output power W	峰值扭矩 Biggest torque N.m
36ZWN60-2420	24	2000	0.09	1600	30	4.8	0.36
36ZWN60-2440	24	4000	0.13	3200	48	15.7	1.0

### ● 无刷行星齿轮减速电机主要技术参数 Brushless Gear Motor Technical Data

配置36ZWN60-2420无刷直流电机 (36ZWN60-2420 BLDC Motor)

减速比 Reduction ratio	3.7	5.2	14	19	27	51	71	100	139	189	264	369
减速级数 Number of gear trains	1	1	2	2	2	3	3	3	3	4	4	4
减速器长度(L) Length(L) mm	31.0	31.0	38.5	38.5	38.5	48.2	48.2	48.2	48.2	55.4	55.4	55.4
空载转速 No-load speed r/min	539	386	143	105	74	39	28	20	14	11	7.6	5.4
额定转速 Rated speed r/min	431	309	114	84	59	31	23	16	12	9	7	4
额定转矩 Rated torque N.m	0.10	0.14	0.34	0.46	0.66	1.1	1.6	2.2	2.5	3	3	3
最大瞬间允许负载 Max. permissible load in a short time N.m	1.0	1.0	3.5	3.5	3.5	7.5	7.5	7.5	7.5	9	9	9

配置36ZWN60-2440无刷直流电机 (36ZWN60-2440 BLDC Motor)

减速比 Reduction ratio	3.7	5.2	14	19	27	51	71	100	139	189	264
减速级数 Number of gear trains	1	1	2	2	2	3	3	3	3	4	4
减速器长度(L) Length(L) mm	31.0	31.0	38.5	38.5	38.5	48.2	48.2	48.2	48.2	55.4	55.4
空载转速 No-load speed r/min	1078	772	286	211	148	78	56	40	29	21	15
额定转速 Rated speed r/min	863	618	229	168	119	63	45	33	26	19	14
额定转矩 Rated torque N.m	0.16	0.22	0.54	0.74	1.0	1.8	2.5	2.5	2.5	3	3
最大瞬间允许负载 Max. permissible load in a short time N.m	1.0	1.0	3.5	3.5	3.5	7.5	7.5	7.5	7.5	9	9