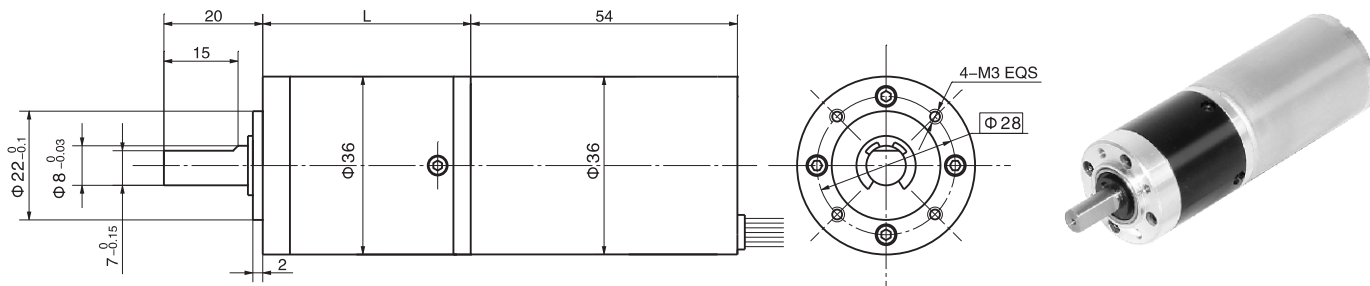


无刷直行星齿轮减速电机 BLDC Planetary Gear Motor

36JXD30K/36ZWN54

Φ36加强型减速器(短型), 允许转矩范围: 0.3N.m~3.0N.m
36mm OD Reinforced Gearbox(Shorter),
Permissible Load Range: 0.3N.m~3.0N.m

● 外形和安装尺寸 Dimensions



● 无刷电动机主要技术参数 Brushless Motor Technical Data

电机型号 Type	额定电压 Rated voltage VDC	空载转速 No-load speed r/min	空载电流 No-load current A	额定转速 Rated speed r/min	额定转矩 Rated torque mN.m	输出功率 Output power W	峰值力矩 Biggest torque mN.m
36ZY54-2430	24	3000	0.15	2500	38.6	10	100
36ZY54-2440	24	4000	0.20	3200	44.7	15	100
36ZY54-2450	24	5000	0.25	4000	47.7	20	100

● 无刷行星齿轮减速电机主要技术参数 Brushless Gear Motor Technical Data

配置36ZY54-2430无刷直流电机 (36ZY54-2430 BLDC Motor)

减速比 Reduction ratio	13	22	49	59	68	82	95	115	181	218	253
减速级数 Number of gear trains	2	2	3	3	3	3	3	3	4	4	4
减速器长度(L) Length(L) mm	35.8	35.8	42.1	42.1	42.1	42.1	42.1	42.1	48.9	48.9	48.9
空载转速 No-load speed r/min	231	136	61	51	44	37	32	26	17	14	12
额定转速 Rated speed r/min	192	114	51	42	37	30	26	22	14	11	9.9
额定转矩 Rated torque N.m	0.41	0.69	1.4	1.7	1.9	2.3	2.7	3	3	3	3
最大瞬间允许负载 Max. permissible load in a short time N.m	3.5	3.5	7.5	7.5	7.5	7.5	7.5	7.5	9	9	9

配置36ZY54-2440无刷直流电机 (36ZY54-2440 BLDC Motor)

减速比 Reduction ratio	13	22	49	59	68	82	95	115	181	218
减速级数 Number of gear trains	2	2	3	3	3	3	3	3	4	4
减速器长度(L) Length(L) mm	35.8	35.8	42.1	42.1	42.1	42.1	42.1	42.1	48.9	48.9
空载转速 No-load speed r/min	308	182	82	68	59	49	42	35	22	18
额定转速 Rated speed r/min	246	145	65	54	47	39	34	28	18	15
额定转矩 Rated torque N.m	0.47	0.80	1.6	1.9	2.2	2.7	3	3	3	3
最大瞬间允许负载 Max. permissible load in a short time N.m	3.5	3.5	7.5	7.5	7.5	7.5	7.5	7.5	9	9

配置36ZY54-2450无刷直流电机 (36ZY54-2450 BLDC Motor)

减速比 Reduction ratio	13	22	49	59	68	82	95	115	181	218
减速级数 Number of gear trains	2	2	3	3	3	3	3	3	4	4
减速器长度(L) Length(L) mm	35.8	35.8	42.1	42.1	42.1	42.1	42.1	42.1	48.9	48.9
空载转速 No-load speed r/min	385	227	102	85	74	61	53	43	28	23
额定转速 Rated speed r/min	277	164	73	61	53	44	38	31	20	17
额定转矩 Rated torque N.m	0.50	0.85	1.7	2.1	2.4	2.9	3	3	3	3
最大瞬间允许负载 Max. permissible load in a short time N.m	3.5	3.5	7.5	7.5	7.5	7.5	7.5	7.5	9	9