

无刷直行星齿轮减速电机 BLDC Planetary Gear Motor

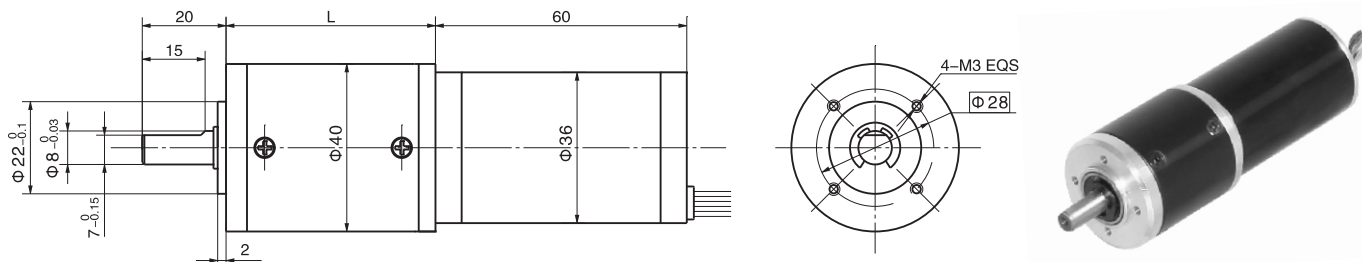
40JX50K/36ZWN60

Φ40加强型减速器, 允许转矩范围: 0.5N.m~5N.m
40mm OD Reinforced Gearbox, Permissible Load Range: 0.5N.m~5N.m

40JXG50K/36ZWN60

Φ40长寿命型减速器, 允许转矩范围: 0.5N.m~5N.m
40mm OD Long Life Gearbox, Permissible Load Range: 0.5N.m~5N.m

● 外形和安装尺寸 Dimensions



● 无刷电动机主要技术参数 Brushless Motor Technical Data

| 电机型号 Type | 额定电压 Rated voltage VDC | 空载转速 No-load speed r/min | 空载电流 No-load current A | 额定转速 Rated speed r/min | 额定转矩 Rated torque mN.m | 输出功率 Output power W | 峰值力矩 Biggest torque N.m |
|--------------|------------------------------|--------------------------------|------------------------------|------------------------------|------------------------------|---------------------------|-------------------------------|
| 36ZWN60-2420 | 24 | 2000 | 0.09 | 1600 | 30 | 4.8 | 0.36 |
| 36ZWN60-2440 | 24 | 4000 | 0.13 | 3200 | 48 | 15.7 | 1.0 |

● 无刷行星齿轮减速电机主要技术参数 Brushless Gear Motor Technical Data

配置36ZWN60-2420无刷直流电机 (36ZWN60-2420 BLDC Motor)

| 减速比 Reduction ratio | 3.82 | 4.88 | 15 | 19 | 24 | 56 | 71 | 91 | 116 | 212 | 271 |
|--|------|------|------|------|------|------|------|------|------|------|------|
| 减速级数 Number of gear trains | 1 | 1 | 2 | 2 | 2 | 3 | 3 | 3 | 3 | 4 | 4 |
| 减速器长度(L) Length(L) mm | 35.0 | 35.0 | 45.4 | 45.4 | 45.4 | 55.6 | 55.6 | 55.6 | 55.6 | 65.8 | 65.8 |
| 空载转速 No-load speed r/min | 524 | 410 | 133 | 105 | 83 | 36 | 28 | 22 | 17 | 9.4 | 7.4 |
| 额定转速 Rated speed r/min | 419 | 328 | 107 | 84 | 67 | 29 | 23 | 18 | 14 | 7.5 | 6.0 |
| 额定转矩 Rated torque N.m | 0.10 | 0.13 | 0.36 | 0.46 | 0.58 | 1.2 | 1.6 | 2.0 | 2.5 | 4.2 | 5 |
| 最大瞬间允许负载 Max. permissible load in a short time N.m | 1.5 | 1.5 | 6 | 6 | 6 | 12 | 12 | 12 | 12 | 15 | 15 |

配置36ZWN60-2440无刷直流电机 (36ZWN60-2440 BLDC Motor)

| 减速比 Reduction ratio | 3.82 | 4.88 | 15 | 19 | 24 | 56 | 71 | 91 | 116 | 212 | 271 |
|--|------|------|------|------|------|------|------|------|------|------|------|
| 减速级数 Number of gear trains | 1 | 1 | 2 | 2 | 2 | 3 | 3 | 3 | 3 | 4 | 4 |
| 减速器长度(L) Length(L) mm | 35.0 | 35.0 | 45.4 | 45.4 | 45.4 | 55.6 | 55.6 | 55.6 | 55.6 | 65.8 | 65.8 |
| 空载转速 No-load speed r/min | 1047 | 820 | 267 | 211 | 167 | 71 | 56 | 44 | 34 | 19 | 15 |
| 额定转速 Rated speed r/min | 838 | 656 | 213 | 168 | 133 | 57 | 45 | 35 | 28 | 16 | 13 |
| 额定转矩 Rated torque N.m | 0.17 | 0.21 | 0.58 | 0.74 | 0.93 | 2.0 | 2.5 | 3.2 | 4 | 5 | 5 |
| 最大瞬间允许负载 Max. permissible load in a short time N.m | 1.5 | 1.5 | 6 | 6 | 6 | 12 | 12 | 12 | 12 | 15 | 15 |