

无刷直行星齿轮减速电机 BLDC Planetary Gear Motor

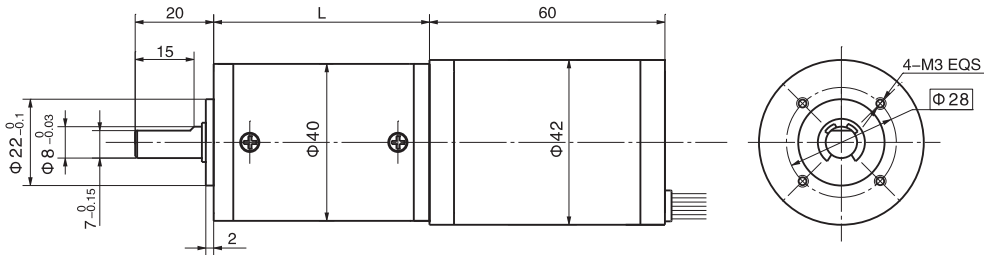
40JX50K/42ZWN60

Φ40加强型减速器, 允许转矩范围: 0.5N.m~5N.m
40mm OD Reinforced Gearbox, Permissible Load Range: 0.5N.m~5N.m

40JXG50K/42ZWN60

Φ40长寿命型减速器, 允许转矩范围: 0.5N.m~5N.m
40mm OD Long Life Gearbox, Permissible Load Range: 0.5N.m~5N.m

● 外形和安装尺寸 Dimensions



● 无刷电动机主要技术参数 Brushless Motor Technical Data

电机型号 Type	额定电压 Rated voltage VDC	空载转速 No-load speed r/min	空载电流 No-load current A	额定转速 Rated speed r/min	额定转矩 Rated torque N.m	额定电流 Rated current A	输出功率 Output power W	峰值力矩 Biggest torque N.m
42ZWN60-2420	24	2000	0.12	1400	0.045	0.60	6.5	0.12
42ZWN60-2430	24	3000	0.16	2100	0.06	1.10	13	0.18

● 无刷行星齿轮减速电机主要技术参数 Brushless Gear Motor Technical Data

配置42ZWN60-2420无刷直流电机 (42ZWN60-2420 BLDC Motor)

减速比 Reduction ratio	3.8	4.9	15	19	24	56	71	91	116	212	271	346
减速级数 Number of gear trains	1	1	2	2	2	3	3	3	3	4	4	4
减速器长度(L) Length(L) mm	35.0	35.0	45.4	45.4	45.4	55.6	55.6	55.6	55.6	65.8	65.8	65.8
空载转速 No-load speed r/min	524	410	133	105	83	36	28	22	17	9.4	7.4	5.8
额定转速 Rated speed r/min	366	287	93	74	58	25	20	15	12	6.6	5.2	4.0
额定转矩 Rated torque N.m	0.15	0.20	0.55	0.69	0.87	1.8	2.3	3.0	3.8	5	5	5
最大瞬间允许负载 Max. permissible load in a short time N.m	1.5	1.5	6	6	6	12	12	12	12	15	15	15

配置42ZWN60-2430无刷直流电机 (42ZWN60-2430 BLDC Motor)

减速比 Reduction ratio	3.8	4.9	15	19	24	56	71	91	116	212	271
减速级数 Number of gear trains	1	1	2	2	2	3	3	3	3	4	4
减速器长度(L) Length(L) mm	35.0	35.0	45.4	45.4	45.4	55.6	55.6	55.6	55.6	65.8	65.8
空载转速 No-load speed r/min	785	615	200	158	125	54	42	33	26	14	11
额定转速 Rated speed r/min	550	430	140	111	88	38	30	23	20	12	10
额定转矩 Rated torque N.m	0.21	0.26	0.73	0.92	1.2	2.5	3.1	4	4	5	5
最大瞬间允许负载 Max. permissible load in a short time N.m	1.5	1.5	6	6	6	12	12	12	12	15	15