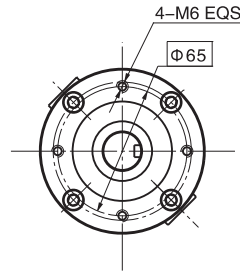
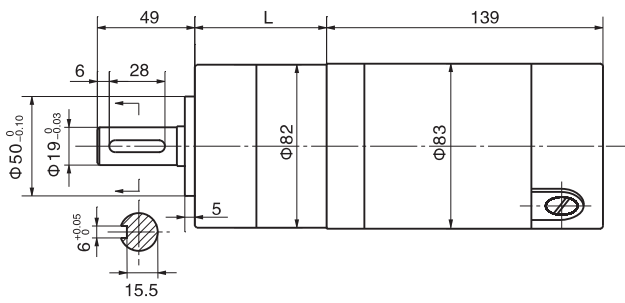


永磁直流行星齿轮电机 PM DC Planetary Gear Motor

82JX1200K/83ZY125

Φ82行星齿轮减速器, 允许转矩范围: 120N.m
82mm OD Planetary Gearhead,
Permissible Load Range: 120N.m

外形和安装尺寸 Dimensions



电动机主要技术参数 Motor Technical Data

电机型号 Type	额定电压 Rated voltage VDC	空载转速 No-load speed r/min	空载电流 No-load current A	额定转速 Rated speed r/min	额定转矩 Rated torque N.m	输出功率 Output power W	额定电流 Rated current A	堵转转矩 Stall torque N.m	堵转电流 Stall current A
83ZY125-2420	24	2000	0.80	1700	0.24	42	3.5	1.6	17
83ZY125-2430	24	3000	0.90	2600	0.30	77	4.6	1.8	20

齿轮减速电机主要技术参数 Gear Motor Technical Data

配置83ZY125-2420直流电机 (83ZY125-2420 DC Motor)

减速比 Reduction ratio	4	7	14	19	25	32	50	64	71	90	116	152	195	329
减速级数 Number of gear trains	1	1	2	2	2	2	3	3	3	3	3	3	3	3
减速器长度(L) Length(L) mm	66	66	90	90	90	90	115	115	115	115	115	115	115	115
空载转速 No-load speed r/min	500	286	143	105	80	63	40	31	28	22	17	13	10	6
额定转速 Rated speed r/min	425	243	121	89	68	53	34	27	24	19	15	11	9	5
额定转矩 Rated torque N.m	0.9	1.5	2.7	3.7	4.9	6.2	8.8	11	12	16	20	27	34	58
最大瞬间允许负载 Max. permissible load in a short time N.m	60	60	180	180	180	180	360	360	360	360	360	360	360	360

配置83ZY125-2430直流电机 (83ZY125-2430 DC Motor)

减速比 Reduction ratio	4	7	14	19	25	32	50	64	71	90	116	152	195	329
减速级数 Number of gear trains	1	1	2	2	2	2	3	3	3	3	3	3	3	3
减速器长度(L) Length(L) mm	66	66	90	90	90	90	115	115	115	115	115	115	115	115
空载转速 No-load speed r/min	750	429	214	158	120	94	80	47	42	33	26	20	15	9
额定转速 Rated speed r/min	625	357	179	132	100	78	50	39	35	28	22	16	13	8
额定转矩 Rated torque N.m	1.1	1.9	3.4	4.6	6.1	7.8	11	14	16	20	25	33	43	72
最大瞬间允许负载 Max. permissible load in a short time N.m	60	60	180	180	180	180	360	360	360	360	360	360	360	360